



State of Colorado - Base

SUMMARY OF BENEFITS

Additional discounts

40% OFF

Complete pair of prescription eyeglasses

20% OFF

Non-prescription sunglasses

20% OFF

Remaining balance beyond plan coverage

These discounts are not insured benefits and are for in-network providers only

Take a sneak peek before enrolling

- You're on the INSIGHT Network
- For a complete list of in-network providers near you, use our Enhanced Provider Locator on eyemed.com or call 1.888.485.5174.
- For LASIK providers, call 1.877.5LASER6.

Vision Care Services	In-Network Member Cost	Out-of-Network Reimbursement
Exam With Dilation as Necessary	\$25 Co-pay	Up to \$45
Retinal Imaging	Up to \$39	N/A
Frames	\$0 Co-pay, \$130 Allowance, 20% off balance over \$130	Up to \$70
Standard Plastic Lenses		
Single Vision	\$25 Co-pay	Up to \$30
Bifocal	\$25 Co-pay	Up to \$50
Trifocal	\$25 Co-pay	Up to \$65
Lenticular	\$25 Co-pay	Up to \$100
Standard Progressive Lens	\$80 Co-pay	Up to \$50
Premium Progressive Lens ^A	\$110 Co-pay - \$200 Co-pay	
Tier 1	\$110 Co-pay	Up to \$50
Tier 2	\$120 Co-pay	Up to \$50
Tier 3	\$135 Co-pay	Up to \$50
Tier 4	\$200 Co-pay	Up to \$50
Lens Options		
UV Treatment	\$0 Co-pay	Up to \$5
Tint (Solid and Gradient)	\$0 Co-pay	Up to \$5
Standard Plastic Scratch Coating	\$15	N/A
Standard Polycarbonate-Adults	\$40	N/A
Standard Polycarbonate-Kids under 19	\$0 Co-pay	Up to \$5
Standard Anti-Reflective Coating	\$45 Co-pay	Up to \$5
Premium Anti-Reflective Coating ^A	\$57 Co-pay - \$85 Co-pay	
Tier 1	\$57 Co-pay	Up to \$5
Tier 2	\$68 Co-pay	Up to \$5
Tier 3	\$85 Co-pay	Up to \$5
Photochromic/Transitions	\$75	N/A
Other Add-Ons and Services	20% off retail	N/A
Contact Lens Fit and Follow-Up (Contact lens fit and follow up visits are available once a comprehensive eye exam has been completed)		
Standard Contact Lens Fit & Follow-Up	\$40	N/A
Premium Contact Lens Fit & Follow-Up	10% off retail price	N/A
Contact Lenses (Contact lens allowance includes materials only)		
Conventional	\$0 Co-pay, \$130 Allowance, 15% off balance over \$130	Up to \$115
Disposable	\$0 Co-pay, \$130 Allowance; plus balance over \$130	Up to \$115
Medically Necessary	\$0 Co-pay, paid-in-full	Up to \$210
Laser Vision Correction		
LASIK or PRK from U.S. Laser Network	15% off the retail price or 5% off the promotional price	N/A
Hearing Care		
Hearing Health Care from Amplifon Hearing Network	40% off hearing exams and a low price guarantee on discounted hearing aids	N/A
Frequency		
Examination	Once every plan year	
Lenses (in lieu of contact lenses)	Once every plan year	
Contact Lenses (in lieu of lenses)	Once every plan year	
Frame	Once every plan year	

Benefits are not provided from services or materials arising from: Orthoptic or vision training, subnormal vision aids and any associated supplemental testing; Aniseikonic lenses, medical and/or surgical treatment of the eye, eyes or supporting structures; Any Vision Examination, or any corrective eyewear required by a Policyholder as a condition of employment; safety eyewear; Services provided as a result of any workers' compensation law, or similar legislation, or required by any governmental agency or program whether federal, state or subdivisions thereof; Plano (non-prescription) lenses; Non-prescription sunglasses; Two pair of glasses in lieu of bifocals; Services or materials provided by any other group benefit plan providing vision care; Services rendered after the date an insured person ceases to be covered under the Policy, except when Vision Materials ordered before coverage ended are delivered, and the services rendered to the insured Person are within 31 days from the date of such order. Lost or broken lenses, frames, glasses or contact lenses will not be replaced except in the next Benefit Frequency when Vision Materials would next become available. Benefits may not be combined with any discount, promotional offering, or other group benefit plans. Standard/Premium Progressive lens not covered - fund as a Bifocal lens. Standard Progressive lens covered - fund Premium Progressive as a Standard. Benefit allowance provides no remaining balance for future use within the same benefits year. Fees charged for a non-insured benefit must be paid in full to the Provider. Such fees or materials are not covered. Underwritten by Fidelity Security Life Insurance Company of Kansas City, Missouri, Fidelity Security Life Policy number VC-19/VC-20, form number M-9083. This is a snapshot of your benefits. The Certificate of Insurance is on file with your employer. ^APremium progressives and premium anti-reflective designations are subject to annual review by EyeMed's Medical Director and are subject to change based on market conditions. Fixed pricing is reflective of brands at the listed product level. All providers are not required to carry all brands at all levels. Not available in all states. Some provisions, benefits, exclusions or limitations listed herein may vary.

What's in it for me?

Options. It's simple really. We're dedicated to helping you see clearly – and that's why we've built a network that gives you lots of choices and flexibility. You can choose from thousands of independent and retail providers to find the one that best fits your needs and schedule. No matter which one you choose, our plan is designed to be easy-to-use and help you access the care you need. Welcome to EyeMed.



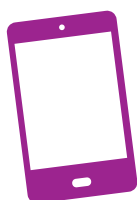
Benefits Snapshot	With EyeMed	Out-of-Network Reimbursement
Exam, with dilation as necessary (once every plan year)	\$25 Co-pay	Up to \$45
Frames (once every plan year)	\$0 Co-pay, \$130 Allowance; 20% off balance over \$130	Up to \$70
Single Vision Lenses (once every plan year) or	\$25 Co-pay	Up to \$30
Contacts (once every plan year)	\$0 Co-pay, \$130 Allowance; plus balance over \$130	Up to \$115

And now it's time for the breakdown . . .

Here's an example of what you might pay for a pair of glasses with us vs. what you'd pay without vision coverage. So, let's say you get an eye exam and choose a frame that costs \$163 with single vision lenses that have UV and scratch protection. Now let's see the difference...

77%
SAVINGS
with us*

	With EyeMed	Without Insurance**
Exam	\$25 Co-pay	Exam \$106
Frame	\$163 -\$130 Allowance \$33 -\$6.60 (20% discount off balance) \$26.40	Frame \$163
Lens	\$25 Co-pay \$0 UV treatment add-on +\$15 scratch coating add-on \$40	Lens \$78 \$23 UV treatment add-on +\$25 scratch coating add-on \$126
Total	\$91.40	Total \$395



Download the EyeMed Members App

It's the easy way to view your ID card, see benefit details and find a provider near you.



*This is a snapshot of your benefits. Actual savings will depend on provider, frame and lens selections. **Based on industry averages.